



SAMSUNG SDI

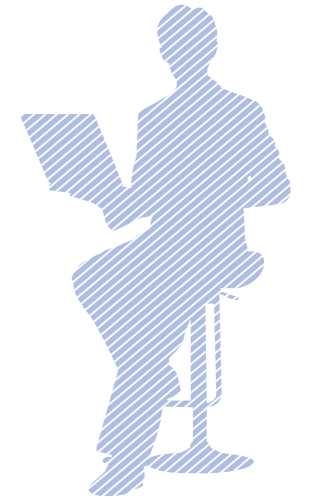
# Creative Work

Architectural Manual

**staron**<sup>®</sup>  
Solid Surfaces



Design by Simone Micheli



**Enhance  
the quality  
and completeness  
of your design  
by using Staron  
premium materials.**

#### **Elegant textures and variety of colors**

Staron materials exceed natural translucent marbles with its warm, soft textures elevating any interior design of the highest quality. Upgrade your interiors with any imaginable design idea that can be expressed by the myriad of colors and patterns.

#### **Excellent workability and implementation of various designs**

Staron is extremely durable but also can be easily handled by using wood working tools and thermo processes to create various cuts and shapes. In addition, with the use of adhesives, seamless joints can be created. It also works harmoniously with other materials such as wood and metals and offer endless possibilities.

CREATIVE WORK

craft  
furniture  
art work

Meet the special material  
made for designers.

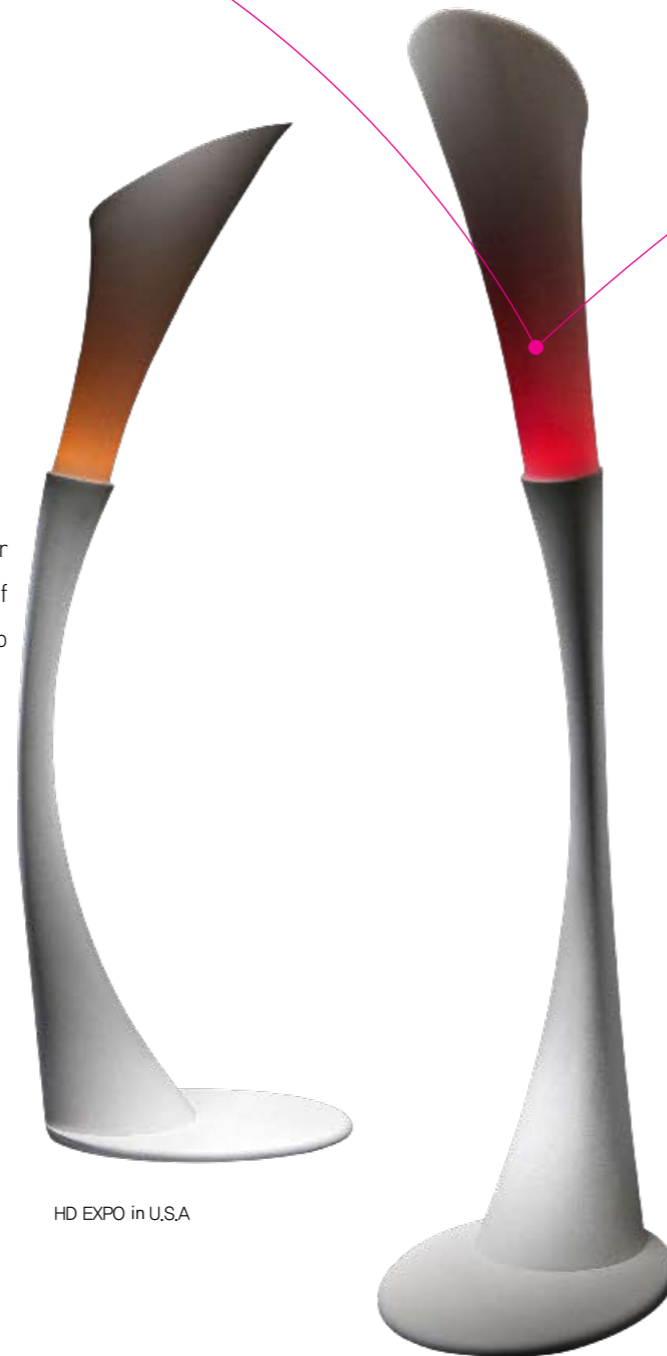


# craft

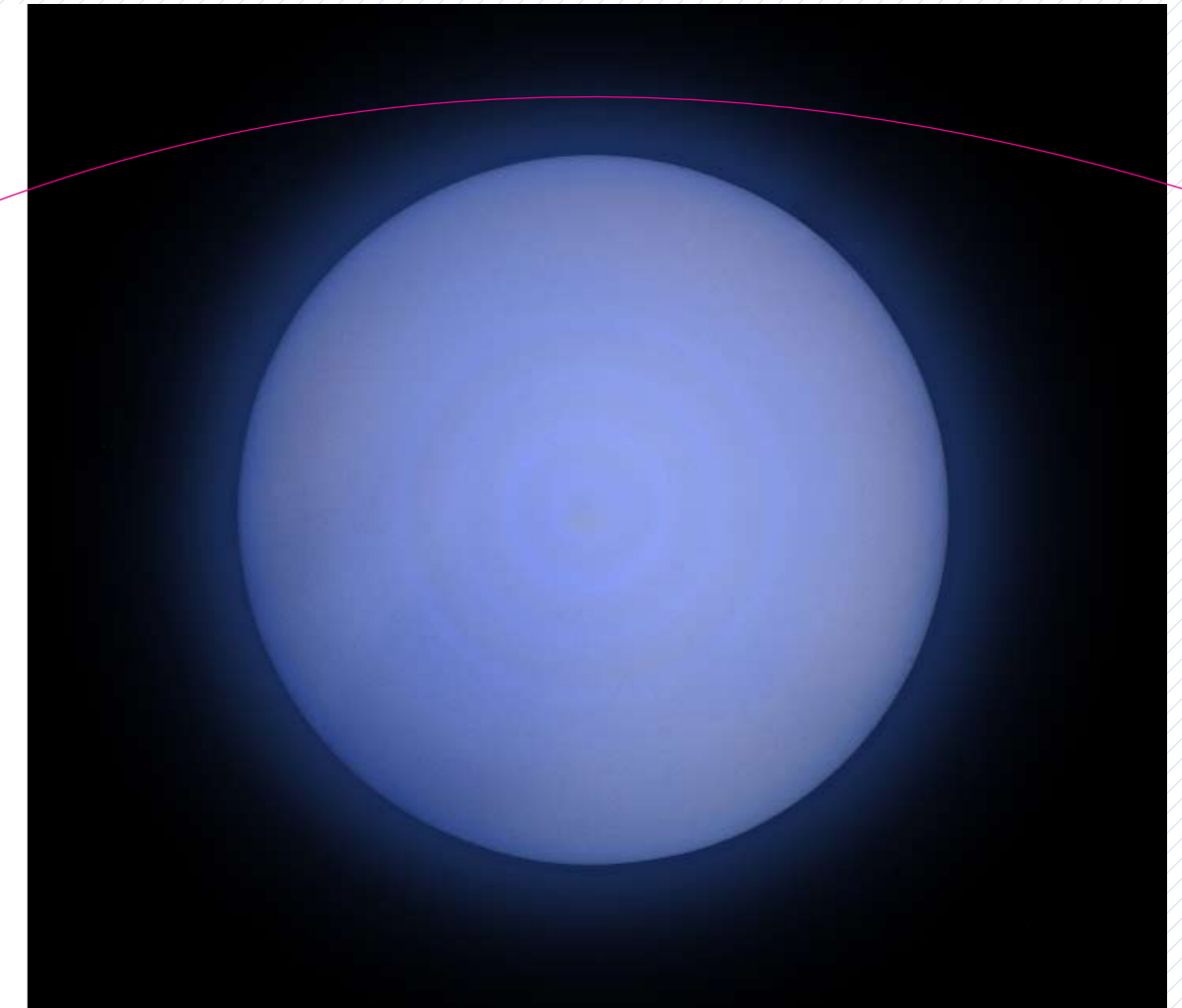
## Staron, the birth of a material with delicate features but rugged functionality.

Staron solid surface is differentiated from other interior materials for its rugged functionality and versatility of use that can implement a designer's creative touch into a space.

Meet Staron, re-born as an art form.



HD EXPO in U.S.A



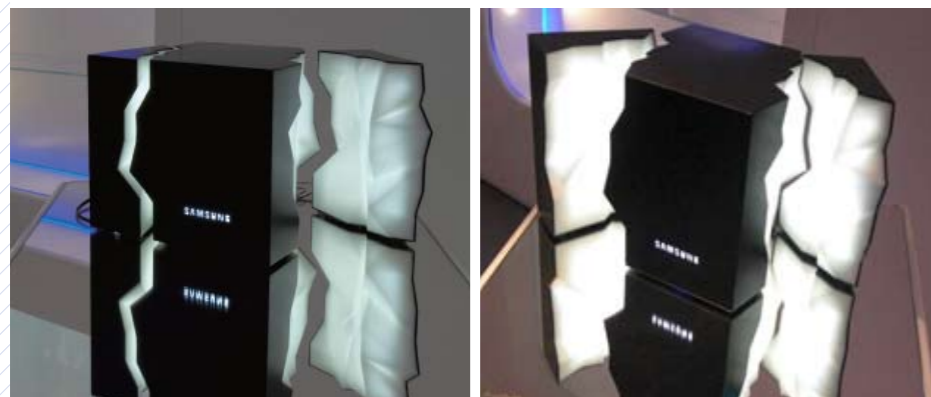
Milan Design Week 2013, Design by Kim Ji-Hyun in Italy

## Directing Staron's soft light.

Staron's light transmittance varies depending on the thickness of the translucent acrylic solid surface. Light lumination can be adjusted through the fine processing of translucent chips to create a work of art.



HD EXPO in U.S.A



## Staron's CNC process can capture the delicate nuances of a designer's intent.

Despite the durable nature of the material, the ease of producing unique shapes allows a designer to freely realize their vision.



Zero zero Design 2009

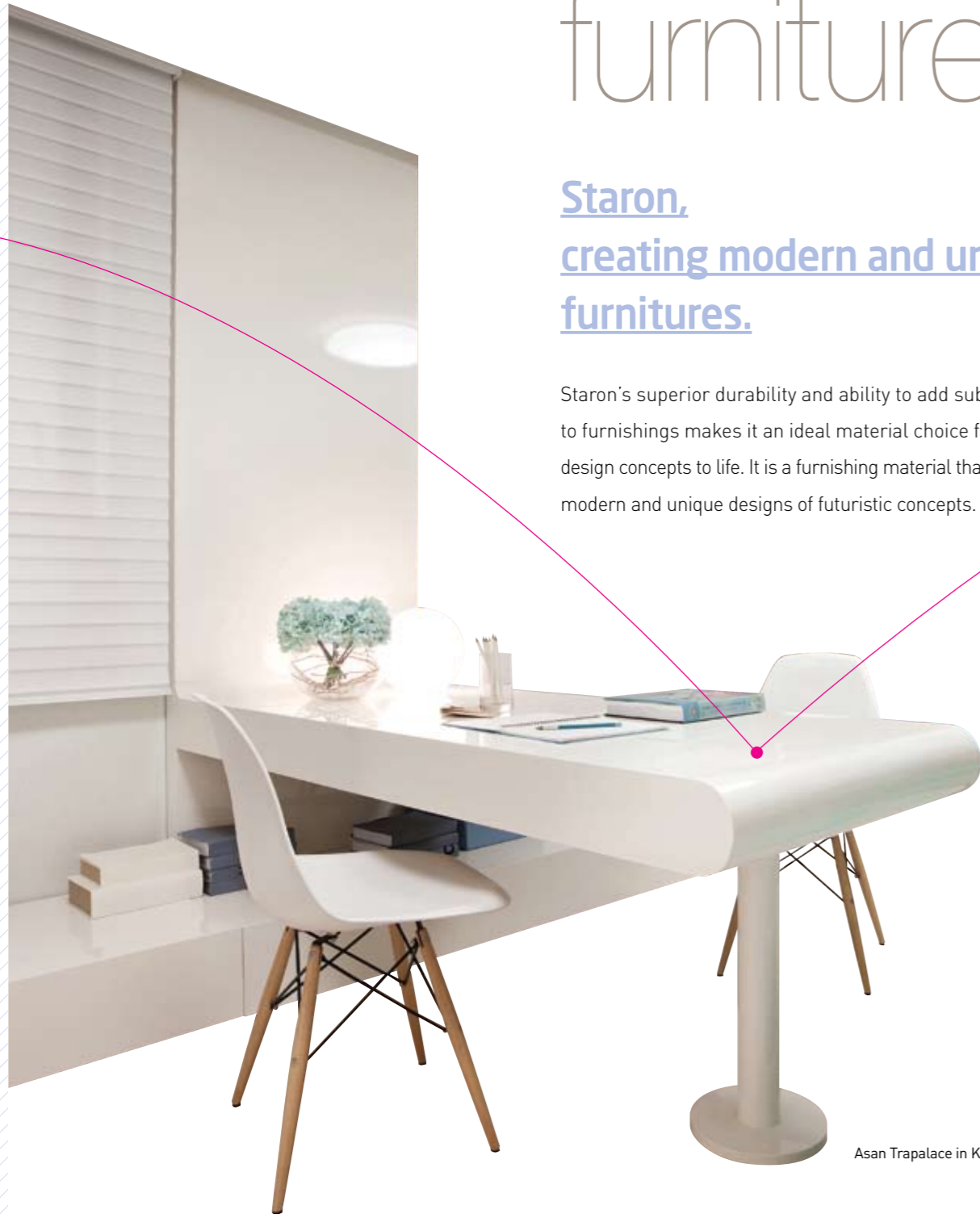


Zero zero Design 2009

# furniture

## Staron, creating modern and unique furnitures.

Staron's superior durability and ability to add subtle details to furnishings makes it an ideal material choice for bringing design concepts to life. It is a furnishing material that embodies modern and unique designs of futuristic concepts.



Asan Trapalace in Korea



Seoul Metropolitan Government in Korea



Asan Trapalace in Korea



HD EXPO in U.S.A



HD EXPO in U.S.A

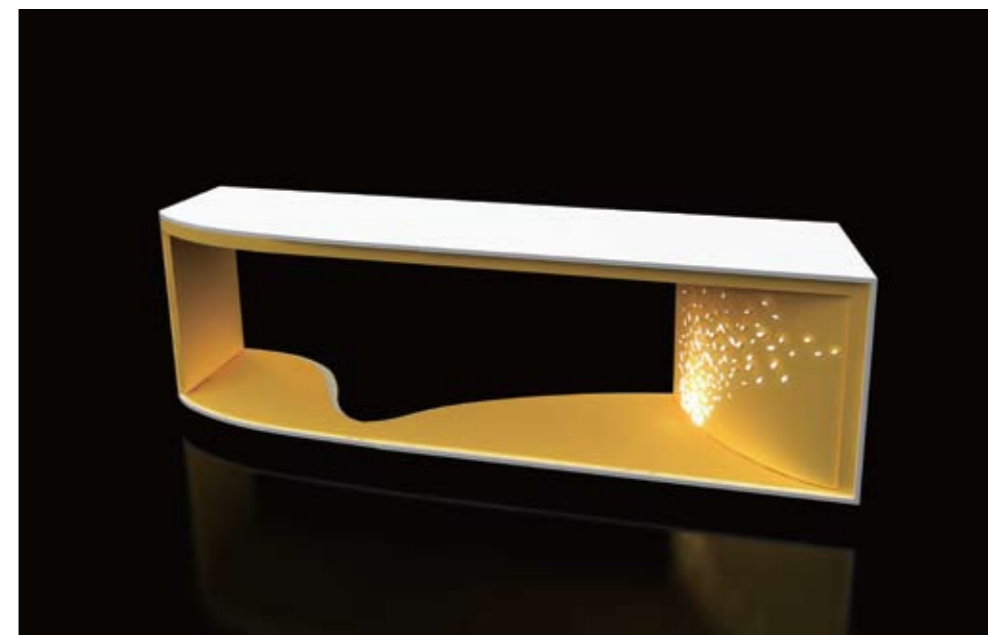


Table in Big 5 show, Dubai



Quadraxone Table, Design by "Mac" Stopa, Milan Design Week 2013, Italy



Staron Countertop, Design by Guy Lafranchi, Glad Ltd., Milan Design Week 2013, Italy





GL4A, Design by Guy Lafranchi Applied Design, Milan Design Week 2013, Italy



Chair, Design by Mac Stopa, Milan Design Week 2013, Italy



Samsung Human Resources Development Center in Korea



Asan Trapalace in Korea



University of Geneva Hospitals in Switzerland

Smooth, seamless surfaces inspires new furniture design.

Staron is an acrylic solid surface that provides seamless surface coverage. Using only adhesives to complete a visibly seamless integration of its parts, it can be combined with various materials as wood and metals to create a blend of endless design possibilities. Different color selections of the material can be combined with adhesive to create a seamless clean finish and reproduce a designer's intent.





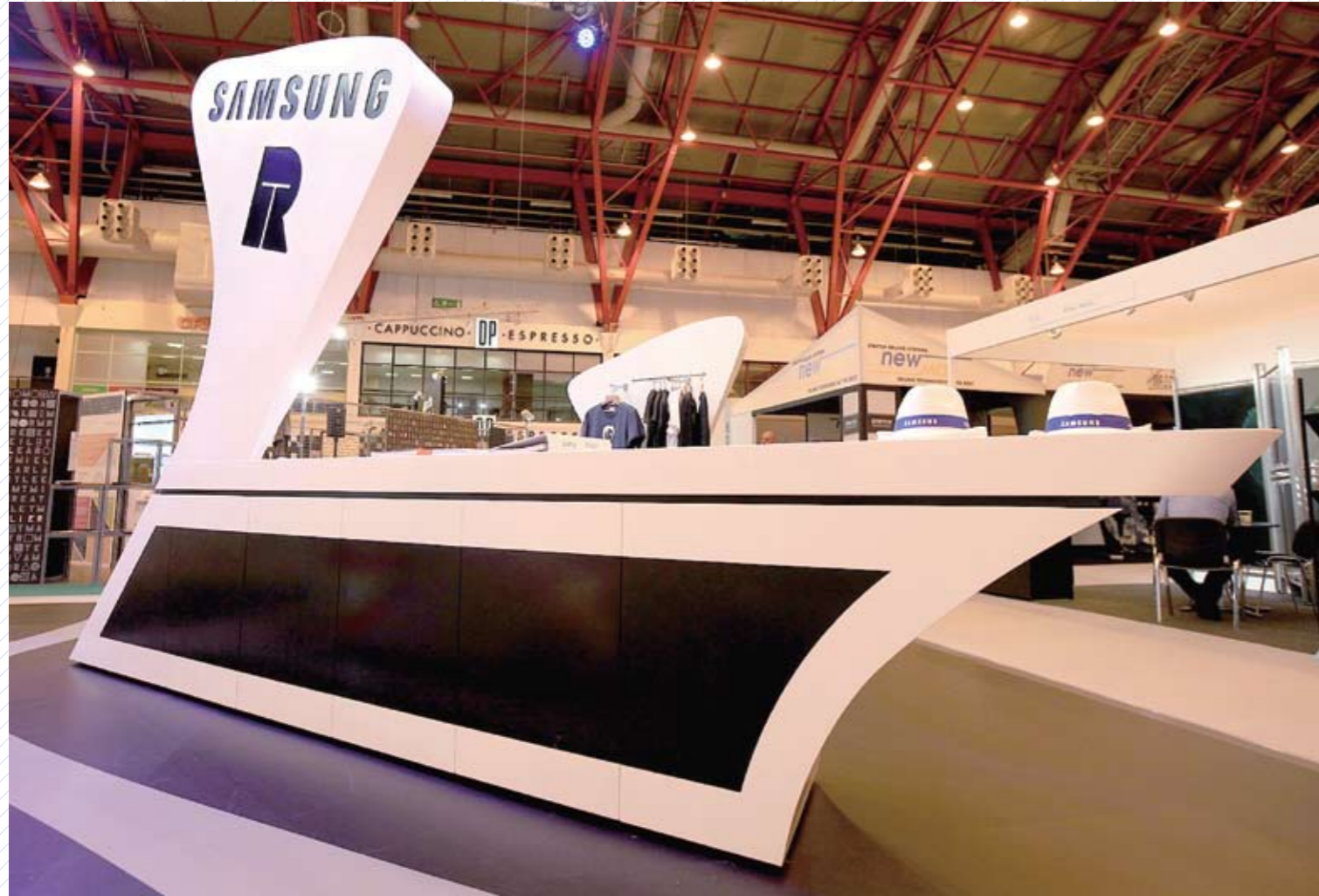
## Design creative furnishings with thermoforming process.

Staron solid surface is an interior material that can be freely formed into various shapes. Depending on the designer's intent, the expressive power of a design is endless.

### The possibilities of thermoformed surfaces

| Pattern          | Thickness(mm) | Min. Inside radius(R) |
|------------------|---------------|-----------------------|
| Solid, Sanded    | 6mm           | 25mm                  |
|                  | 12mm          | 76mm                  |
| Aspen, Pebble    | 6mm           | 102mm                 |
|                  | 12mm          | 127mm                 |
| Quarry, Metallic | 12mm          | 203mm                 |



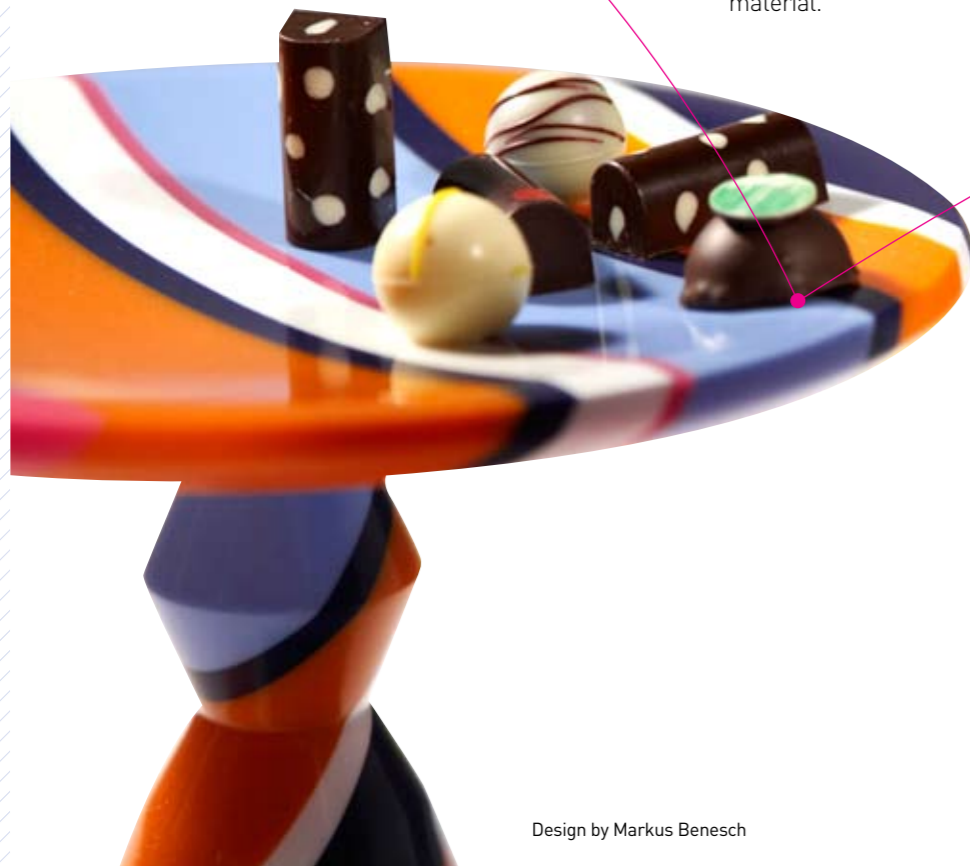


LInterior Fitting Solution for Shop in Shop System, Designed by Zaha Hadid Architects, London 100% Design 2013, U.K

# art work

Staron,  
where ideas give birth  
to new colors.

Staron offers approximately 300 distinctive color and patterns ranges to express glamorous and creative designs. From natural colors to ambitious design concepts, an elegant solution is possible with this material.



Design by Markus Benesch



Design by Markus Benesch





## Colorful and versatile designs.

Staron solid surface is durable but has excellent workability. Ordinary wood working tools can be used to process this material with a variety of color choices. In addition, through the heat treatment process, various surface treatments are possible to satisfy a designers shape and color selection and achieve perfect execution.





Milan Design Week 2013, Design by Kim Ji-Hyun in Italy



Milan Design Week 2013, Design by Kim Ji-Hyun in Italy



[www.staron.com](http://www.staron.com)

#### **SAMSUNG SDI CHEMICAL (USA), INC.**

14251 E. Firestone Blvd. La Mirada, CA 90638 U.S.A.  
Tel : +1-562-926-5520, Fax : +1-562-926-9930  
+1-800-795-7177

#### **SAMSUNG SDI CHEMICAL EUROPE GMBH**

Am Kronberger Hang 6, Samsung House D-65824,  
Schwalbach/Ts., Germany  
Tel : +49-6196-667-403, Fax : +49-6196-667-467  
Free Hotline in Germany : 0800-1-782766

#### **DUBAI OFFICE**

Samsung SDI Chemical Europe Gmbh Dubai Rep. PO Box 48969  
Flat No 2403, Al Shafar Tower 1, Tecom, Greens, Dubai, U.A.E.  
Tel : +971-4-447-3411, Fax : +971-4-447-3412

#### **SHANGHAI OFFICE**

Rm2701, Shanghai International Trade Center,  
2201 West Yan an Rd, Shanghai, China, 200336  
Tel : +86-21-62703000-856, Fax : +86-21-62756882

#### **SAMSUNG SDI CHEMICAL (THAILAND) Co., Ltd.**

16th Floor, Empire Tower, Unit 1602-1603, 195 South Sathorn Road,  
Yannawa, Sathorn, Bangkok 10120, Thailand  
Tel : +66-2-624-6737, Fax : +66-2-624-6780

#### **HEAD OFFICE**

332-2, Gocheon-Dong, Uiwang-Si,  
Gyeonggi-Do, Korea, 437-711  
Tel : +82-31-596-3856, Fax : +82-31-596-3882